

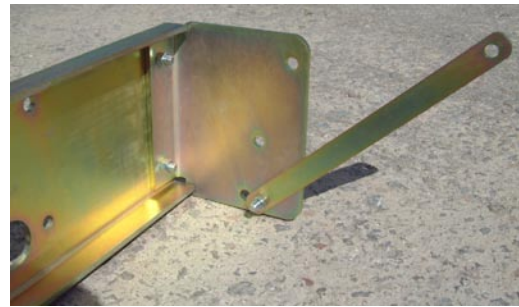
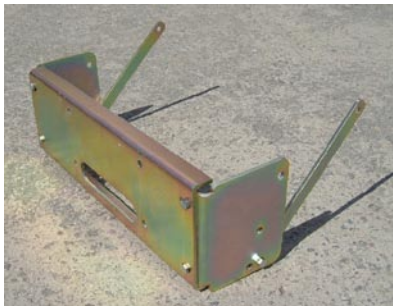


BA 2144 Winch Mount Fitting Instructions.

Kit List

- 1 x Central Winch Mount.
- 2 x Side Brackets.
- 2 x Stays
- 6 x Bolts
- 6 x Nuts
- 6 x Washers

- 1 Loosely assemble the mount as shown in the pictures below except the long stays - Leave these off until later.



- 2 Check that the bumper mounting bolts are pointing in towards the centre of the vehicle and remove the nuts.
- 3 Offer up the Mount to the chassis to see where to cut the spoiler in order to accommodate the fairlead. Cut the spoiler as required.
- 4 With the mount back on the floor, fit the winch and fairlead. The whole unit needs to fitted to the chassis in one go, so some help may be useful for the next step.
- 5 Loosely attach to the bumper mounting bolts.
- 6 The long 'Stays' attach to the two tubes welded to the underside of the chassis. (The tube which the steering arm is attached and the one on the opposite side of the vehicle). Fit the drivers side stay using the existing steering arm nut & bolt and fit the other stay with one 110mm x M10 bolt and nut (Not supplied). These Stays are recommended to prevent twisting of the Mount. Now loosely attach the stays to the mount.
- 7 Tighten all bolts starting with the bumper mounting bolts, then the bolts at the front of the Mount and finally all of the bolts attaching the stays.